



FlexiRest User Manual

Contents

1. Important Safety & Usage Information -----	1-3
2. Parts List -----	4
3. Bed Base Overview-----	5
4. Electronic Overview-----	6
5. Installation Guide-----	7-8
6. Remote Control Pairing -----	9
7. Remote Control Functions-----	10-11
8. Troubleshooting Guide-----	12
9. Maintenance Guidelines and Customer Support-----	13

Important Safety & Usage Information

Prior to operating FlexiRest Adjustable Bed Base, users are strongly advised to read this User Manual thoroughly and retain it for future reference.

To effectively reduce the risk of electric shock, fire, or personal injury, please adhere to the following safety guidelines:

- In the event of a malfunction, ensure the bed base is fully powered off and unplugged from the electrical outlet before conducting any maintenance.
- Before cleaning the bed base, disconnect the power supply and confirm that the plug has been removed.
- When unplugging the power cord, ensure the bed base is in a flat position and the motor is not in operation.
- Keep the power cord away from high-temperature surfaces or corrosive substances.
- If the power cord is damaged, the bed base fails to operate properly, or has been exposed to moisture, discontinue use immediately and contact our Customer Service.
- Operate the bed base strictly in accordance with the instructions provided in this manual.

Do not use accessories that are not authorised by the original manufacturer.

- Children, patients, or individuals with disabilities must be supervised by a responsible adult when using this product.

Power Supply Safety Recommendations:

- For enhanced safety, it is recommended to plug the bed base power cord into a surge protector.
- The power plug must be inserted into a fixed socket or surge protector. Improper connection may result in electric shock or fire.
- Damage caused by the use of improper power sources or unauthorised surge protection devices will not be covered under warranty.

Maintenance and Warranty Conditions:

- Do not dismantle or modify the main control box, motor, or remote control (except for battery replacement), as this will void the warranty.

Intended Usage:

- This product is intended for use in residential environments such as homes or hotels. It is not suitable for hospitals or medical institutions.
- Do not operate this bed base in conjunction with oxygen supply equipment, or near flammable or explosive gases.

Electromagnetic Interference:

- If abnormal operation occurs due to electromagnetic interference, discontinue use immediately and disconnect the power supply.

Pacemaker Notice:

- Under normal circumstances, the vibration function does not interfere with cardiac pacemakers. However, users are strongly advised to consult their physician prior to use.

Child and Pet Safety:

- Dispose of all packaging materials properly to prevent accidental misuse by children or pets.
- To avoid the risk of entrapment or injury, do not allow children or pets to play underneath the bed base.
- Individuals who are not capable of independent operation must not use this product without supervision.

Safety Design Features:

- The bed base is supported solely by the weight of the mattress and does not exert additional pulling force via the motor. This design helps minimise the risk of entrapment.

Motor Usage Recommendations:

- Within any 18-minute period, the motor should not operate continuously for more than 2 minutes to avoid compromising its service life.
- After 2 minutes of continuous operation, the motor must rest for at least 18 minutes before being used again.

Weight Recommendations and Limits:

- The maximum load capacity of this bed base is 320 kilograms, inclusive of the user, mattress, and any items placed on the bed. Ensure that weight is evenly distributed and not concentrated at the head or leg sections. Damage resulting from exceeding the load limit will not be covered under warranty.

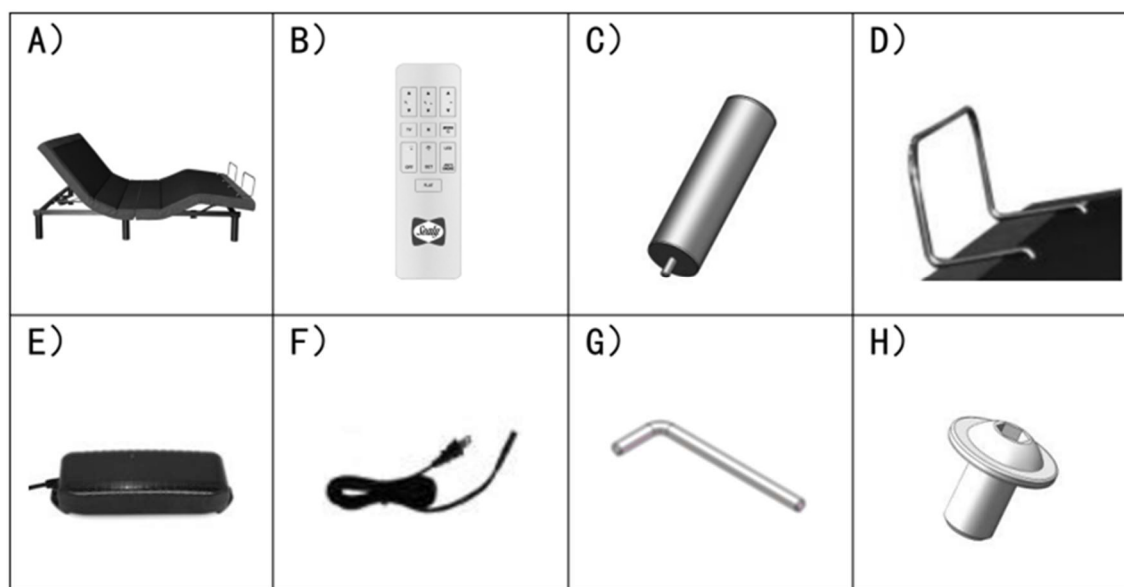
Operational Sound Notice:

- Minor operational sounds may be emitted during bed movement; this is considered normal.
- When the massage function is activated, sound levels may be more noticeable. Higher intensity settings will produce louder sounds accordingly.
- Sound levels may vary depending on the surrounding environment and may be more noticeable in quiet settings.

Parts List

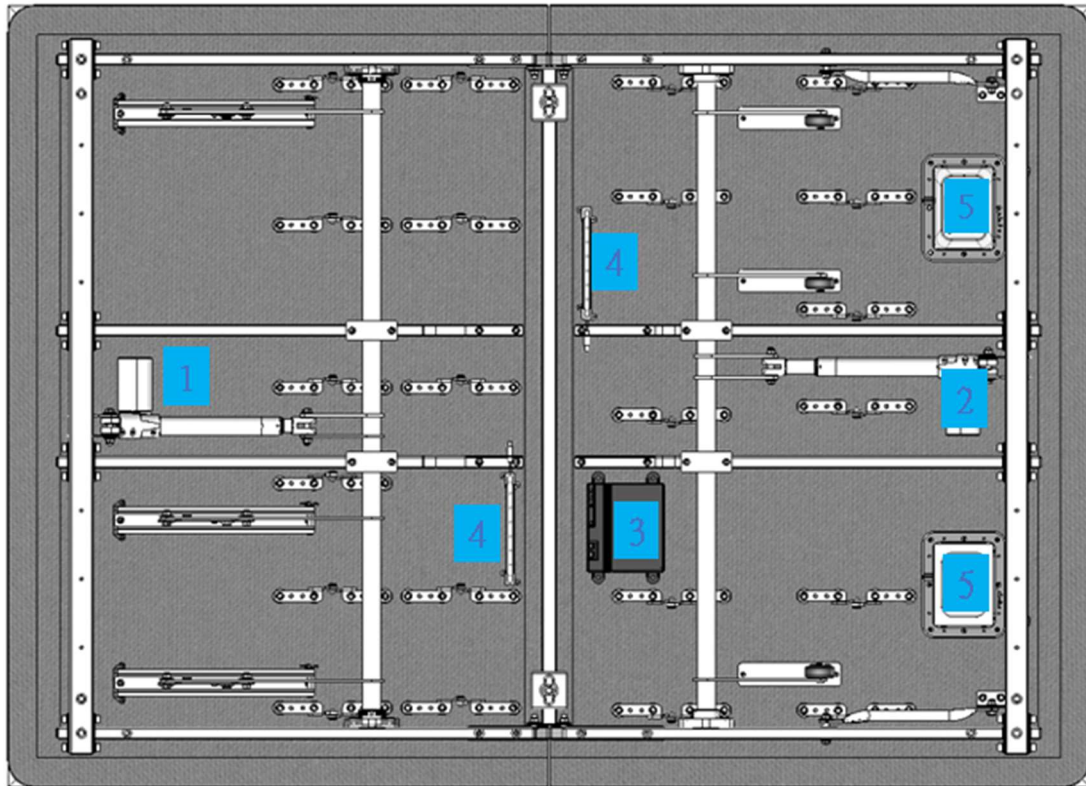
Except for the mattress retainer bar, all components are securely packed and placed inside the outer packaging. Users are advised to inspect the contents carefully upon unpacking to ensure all parts are present and undamaged.

Remarks: Product images and photographs contained in this User Manual are for reference only. The actual appearance and configuration of the product shall be subject to the physical item received. For any enquiries, please contact our Customer Service.



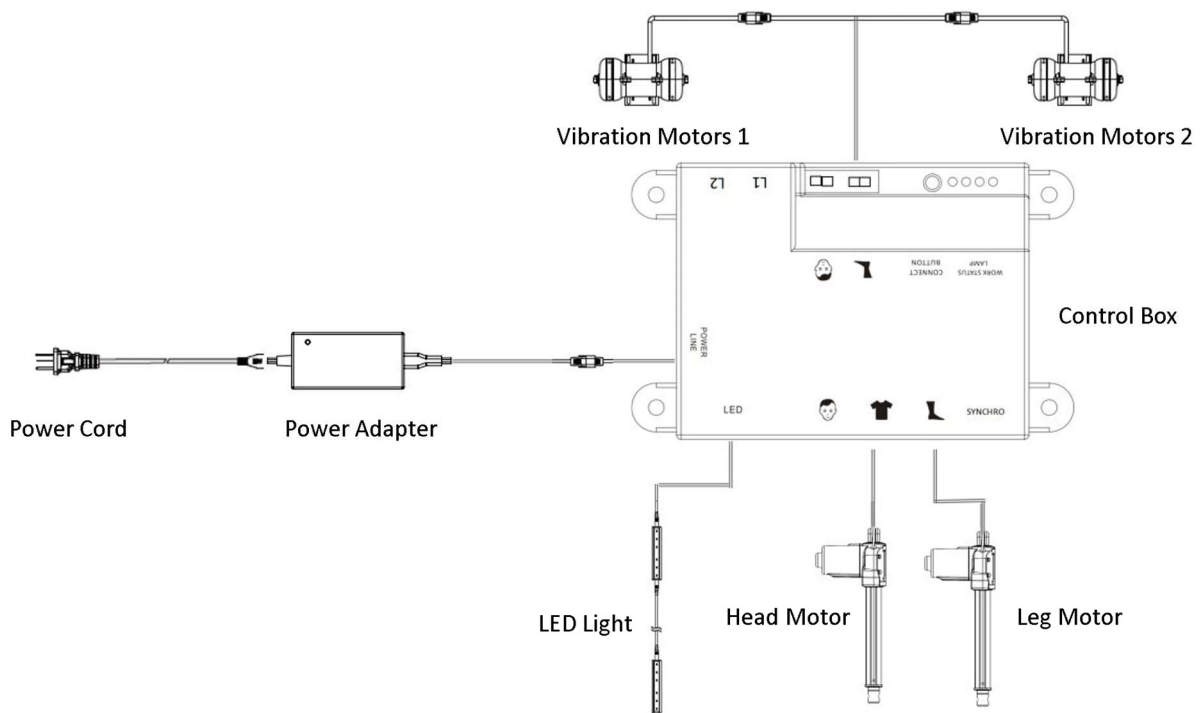
Item	Parts	Quantity
A	Bed Base	1
B	Remote Control	1
C	Stackable Legs	6
D	Mattress Retainer Bar	1-2
E	Power Adapter	1
F	Power Cord	1
G	6# Hex Key	1
H	M10×16 Screw	4

Bed Base Overview



Item	Component
1	Head Motor
2	Leg Motor
3	Control Box
4	LED Light
5	Vibration Motors

Electronic Overview



Installation Guide

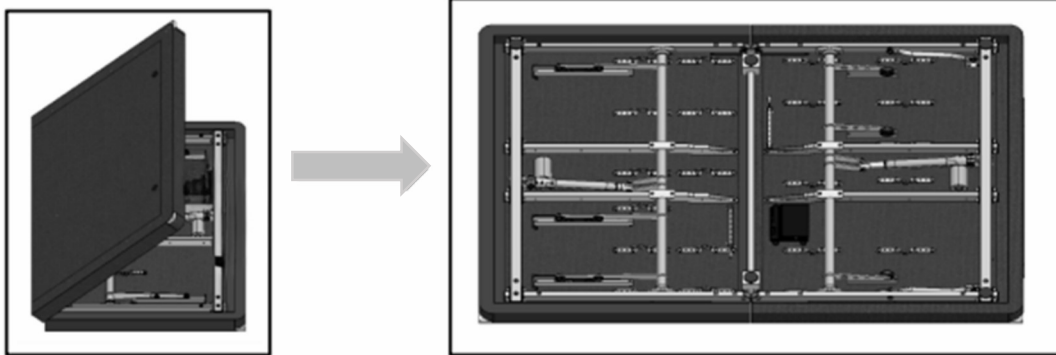
Please read this section carefully before installing the bed base to ensure safe and proper assembly.

1. Unpacking and Inspection :

- Open the bed base box with care. Avoid using sharp tools to prevent damage to the bed base or accessories.
- Verify that all components are present and undamaged, including the bed base, motors, remote control, power cord, and other accessories.

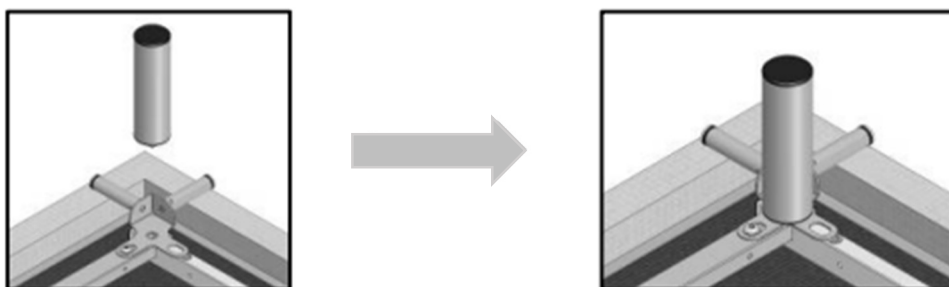
2. Placement

- Remove the bed base from the box and unfold it, ensuring to keep the bottom of the bed base facing up.



3. Installation of Bed Legs :

- Attach the six bed legs to the designated mounting points located at the underside of the bed base. Use the provided tool to securely tighten each leg to ensure stable support.



4. Connecting the Power Supply and Motors

5. Installing the Mattress Retainer Bar

- Carefully turn the bed base over so that the underside is facing upward.
- Install the mattress retainer bar at the specified mounting points to secure the mattress in place.



Upon completion of all installation steps, insert the power cord into the power outlet or surge protector to activate the bed base.



Remote Control Pairing

Step 1: Battery Installation

Open the back cover of the remote control and insert three AAA-size dry-cell batteries into the battery compartment. Ensure that the polarity (+/–) is correctly aligned.

Step 2: Activating Pairing Mode

Method A: Automatic Pairing Mode

- Unplug the bed base from the power outlet and wait approximately 10 seconds.
- Reconnect the power supply. The white pairing indicator light on the control box will begin flashing, indicating that pairing mode has been activated.
- This mode will remain active for approximately 30 seconds. If pairing is not completed within this period, the system will automatically exit pairing mode.

Method B: Manual Pairing Mode

- With the bed base powered on, press and hold the pairing button on the control box for approximately 1 second, then release.
- Confirm that the white pairing indicator light begins flashing, indicating that pairing mode is active.

Step 3: Remote Control Pairing Operation

- Press and hold the “SET” button on the remote control until the backlight begins flashing.
- Release the “SET” button, then press the “Backrest Up” button located at the top left corner.
- When the backlight remains steadily illuminated, pairing is in progress. Release the button.

Pairing is successfully completed when both the remote control backlight and the control box pairing light stop flashing, and a single beep is emitted from the control box.

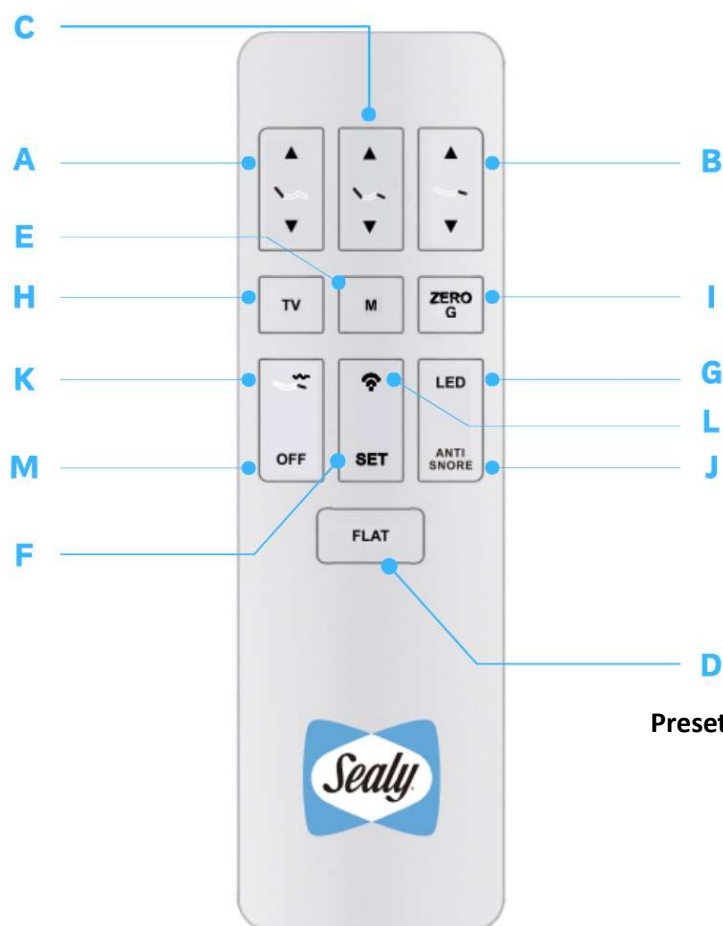
Pairing Failure Handling

If the remote control backlight stops flashing and pressing function buttons such as “Backrest Up/Down” or “Legrest Up/Down” yields no response, pairing has failed. Please repeat the above three steps until the control box emits a beep and the indicator light ceases flashing, confirming successful pairing.

Remote Control Functions

The bed base is equipped with a wireless remote control for convenient operation. Functions are categorised as follows:

Basic Function Buttons:



- A. Headrest Adjustment:** Adjust the angle of the backrest section.
- B. Lagrest Adjustment:** Press to adjust the height of the lagrest section.
- C. Backrest & Lagrest Adjustment:** Press to simultaneously adjust both the backrest and lagrest sections.
- D. FLAT:** Returns the bed base to a fully horizontal position.
- E. M:** Allows users to save a preferred bed base position. Pressing the M Button will automatically return the bed base to the saved position.
- F. SET:** A function key used primarily for saving memory positions and switching modes.
- G. LED:** Press to activate under-bed lighting, illuminating the surrounding bed base area for nighttime convenience without disturbing others.

Preset Position Buttons:

- H. TV:** Press to raise the backrest to approximately 52° and the lagrest to approximately 28°, ideal for watching television, reading, or using a mobile device.
- I. ZERO G:** Press to raise the backrest to approximately 15° and the lagrest to approximately 40°, simulating a zero-gravity posture to promote relaxation.
- J. ANTISNORE:** Press to elevate the backrest by approximately 5–8°, which may help improve breathing. The bed base will automatically return to a flat position after 5 minutes.

Massage Function Keys:

- K. Leg Relaxation:** Activates or deactivates leg relaxation function.
- L. Intensity Adjustment:** Allows selection of different relaxation levels.
- M. OFF:** Stops leg relaxation function.

Remote Control Memory Function

Memory Key	Default Position Operation	Save Current Position	Recall Saved Position	Cancel Memory
TV	<p>TV backlight is off.</p> <p>Press to move bed base to preset TV position.</p>	<p>Press and hold SET for 3 seconds.</p> <p>When backlight flashes, press the TV.</p> <p>TV backlight turns steady — memory saved.</p>	<p>TV backlight is steady.</p> <p>Press to move bed base to saved position.</p>	<p>Press and hold SET for 3 seconds.</p> <p>When backlight flashes, press TV.</p> <p>TV backlight turns off — memory cancelled.</p>
ZEROG	<p>ZEROG backlight is off.</p> <p>Press to move bed base to preset ZEROG position.</p>	<p>Press and hold the SET for 3 seconds.</p> <p>When backlight flashes, press ZEROG.</p> <p>ZEROG backlight turns steady — memory saved.</p>	<p>ZEROG backlight is steady.</p> <p>Press to move bed base to saved position.</p>	<p>Press and hold SET for 3 seconds.</p> <p>When backlight flashes, press ZEROG.</p> <p>ZEROG backlight turns off — memory cancelled.</p>
M	<p>M backlight is off.</p> <p>No preset position.</p>	<p>Press and hold the SET for 3 seconds.</p> <p>When backlight flashes, press M.</p> <p>M backlight turns steady — memory saved.</p>	<p>M backlight is steady.</p> <p>Press to move bed base to saved position.</p>	<p>Press and hold SET for 3 seconds.</p> <p>When backlight flashes, press M.</p> <p>M backlight turns off — memory cancelled.</p>
ANTI SNORE	<p>ANTI SNORE key backlight is off.</p> <p>Press to move bed base to preset ANTI SNORE position.</p> <p>Bed base returns to flat after 5 minutes.</p>	<p>Press and hold the SET for 3 seconds.</p> <p>When backlight flashes, press ANTI SNORE.</p> <p>ANTI SNORE backlight turns steady — memory saved.</p>	<p>ANTI SNORE backlight is steady.</p> <p>Press to move bed base to saved position.</p> <p>Bed base returns to flat after 5 minutes.</p>	<p>Press and hold SET for 3 seconds.</p> <p>When backlight flashes, press ANTI SNORE.</p> <p>ANTI SNORE backlight turns off — memory cancelled.</p>

Troubleshooting

If any irregularities occur during use of this product, please refer to the following recommended solutions:

Symptom	Possible Cause	Solution
Remote control backlight not illuminated (no button response)	Batteries improperly installed or depleted	Check battery +/- and replace with new batteries
	Remote control malfunction	Contact Customer Service for replacement
Central area of remote control flashing	Low battery	Replace the remote control batteries
Bed Base unresponsive	Power supply not properly connected	Ensure power cord is securely connected to wall socket
	Remote control not successfully paired / communication failure	Refer to page 9 of this manual to reinitiate pairing process
	Remote control battery power insufficient	Replace the remote control batteries
	Control box in protection mode	Disconnect power for approximately 30 seconds, then reconnect to restart system
Unusual sound during motor operation	Minor humming sound during normal operation	This is normal and does not require action
	Motor wear or damage	Contact Customer Service for motor replacement
Bed Base movement unusually slow	Mechanical design causes slower thrust conversion	This is normal and does not require action
	Load exceeds capacity or weight distribution is uneven	Avoid concentrating weight in one area; ensure even load distribution across bed base
	Excessively slow movement may indicate abnormality	Check load distribution; contact Customer Service if necessary

Important Notice

If the issue cannot be resolved using the methods described above, do not attempt to disassemble or repair the product yourself. It is strongly recommended to contact our Customer Service for inspection to ensure safety and preserve your warranty coverage.

Maintenance Guidelines

To ensure optimal long-term performance of the bed base, it is recommended to carry out the following maintenance procedures regularly:

- Before cleaning, disconnect the power supply and remove the plug from the socket to ensure safety.
- The bed base surface may be gently wiped using a clean dry cloth or soft brush. Avoid using alcohol-based or corrosive cleaning agents.
- Upholstered surfaces may be cleaned with a damp sponge or cloth. A standard vacuum cleaner or one equipped with mite-removal functionality may also be used to remove dust and debris.
- For stubborn stains, professional cleaning services are recommended to prevent damage to materials or reduction in product lifespan.
- Periodically inspect the power cord and plug for signs of wear, looseness, or deformation.
- To prolong the service life of the bed base, avoid prolonged exposure to direct sunlight.
- Do not attempt to disassemble the control box, motor, or other electronic components, as this may void the warranty.

Customer Support

For enquiries, technical assistance, or maintenance services, please contact our company through the following channels:

- **Customer Service WhatsApp:** +852 6389 8231
- **Email:** general@sealy.com.hk
- **Official Website:** www.sealy.com.hk
- **Service Hours:** Monday to Friday, 9:00 a.m. to 6:00 p.m. (excluding public holidays)